



Glamoureaux

Flat Panel Drapery Instructions



Flat Panel Drapery Installation

Getting Started

Carefully read all instructions before you begin installation. Please make sure that you have your rod drapery hardware mounted to the wall. Be careful as you unpack the flat panel drapery as drapery pins have been pre-installed.

As a standard we set the drapery pins every 7 inches. Hooks may also be raised or lowered +/- ½ inch to adjust the height.

Installing Your Flat Panel Draperies

1. Make sure you have the right number of rings or traverse eyelets for each hook. Attach each end of the panel first.
2. Attach the remaining hooks into the eyelets. (Repeat Step 1 and 2 for all panels)
3. Dress your drapes. See "HOW TO DRESS FLAT PANELS" on Page 2.

Drapery Care

Once the draperies are installed most wrinkles and folds will hang out on their own within 1 - 2 weeks. A garment / commercial steamer may also be used to help smooth out the wrinkles. Certain fabrics like silks or linens have natural characteristics that steaming won't remove.

HOW TO DRESS FLAT PANELS

1. The outer ring needs to be placed between the finial and the bracket to anchor the Flat panel.



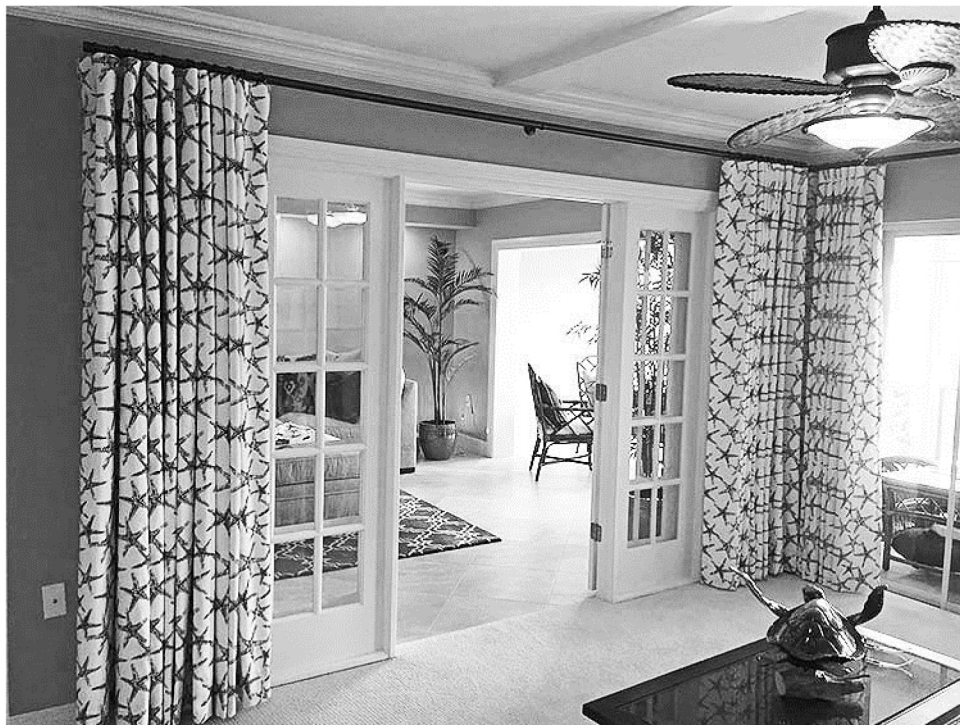
2. Create a fold around the drapery pin by pressing the thicker material on top of the panel. Then run your fingers all the way down the panel to create the fold in the fabric.



3. After you are done, the folds will be wrapped around the drapery pin, going back to the wall.



Final look.



How to return the drape to the wall.

We recommend attaching the outer side of each Flat panel to the wall. This technique prevents the light going through the sides of the panels and creates custom finished look.

1. Hammer tenter hook into the wall.



2. Hook the last outer drapery hook onto the tenter hook.



3. The side will be covered by the panel.



4. You can also train the folds by tying the drape on the bottom and the middle and leaving it tied for 2 -3 days. That way the folds will form all the way from top to bottom and the panel will keep its shape when open or closed. This is called training the drape.

